



WE ARE THE FOOD BANK Partner Agency Newsletter

April 2024



From the CEO

Dear Agency Partners,



Mark your calendars for our next Partner Agency Meeting on April 15! We've got some important topics on the agenda, including the state of food banks in California, the future of disaster food assistance, disaster readiness, and safety-net program outreach.

One of the key agenda items will be a review of food access by day-of-the-week in Santa Cruz County, where we will analyze the gaps and explore potential solutions. Additionally, we will be surveying agencies for their ShopSmart item preferences to better tailor our offerings to the needs of the community.

Your attendance and input are invaluable as we navigate these important topics. Thank you for your continued partnership and dedication to fighting hunger in our community. I look forward to seeing you April 15 (10:00 a.m. -1:00 p.m.) at St. Philips the Apostle Episcopal Church, 5271 Scotts Valley Dr., Scotts Valley.

In Partnership,

Erica Padilla-Chavez
Chief Executive Officer

Agency Network Update

Construction & Traffic Issues

We appreciate the patience and understanding as our Logistics Manager and driver crew strive to meet all our network's delivery needs, all while contending with our county's congestion resulting from construction, lane closures, and rush hour traffic. There are construction projects happening on Highway 1 which could result in unavoidably late deliveries. Our Agency Network Team will continue to alert any affected partners as timely as possible. Contact us if you are concerned about your order delivery schedule.

Agency Statements Reminder

The payment amount in the "credits" column of your statements will show a zero value. Unfortunately, we are not able to update that issue with our current inventory software. Instead, please reference the "balance" column to see that the total amount owed decreased. Also, at the bottom of the "credits" column, on the "statement balance" line, there is a total of all the payments made during the statement time period. We apologize for any confusion. We are currently working to upgrade our inventory software. For questions, contact Mike or RJ at Agencies@thefoodbank.org, 831-256-7201.

Office Hours

For any questions, or concerns from network agency representatives, our next office hours will be **Wednesday, April 24** from **8:30 -10:30 a.m.** This will be over Microsoft Teams and the link and information is below.

[Join the Meeting](#) | Meeting ID: 265 503 077 122 | Passcode: tAkmj

Agency Participation Numbers

February 2024			
County Zone	All Households	All Individuals	% Change from Jan. '24
North County	16,565	31,356	0.05%
South County	10,198	33,713	8.46%
San Lorenzo Valley	5,058	11,095	0.51%
Out of County	1,303	2,942	0.00%
Total	33,124	79,106	3.54%

*42 of 51 (82%) partner agencies reporting – Thank you!

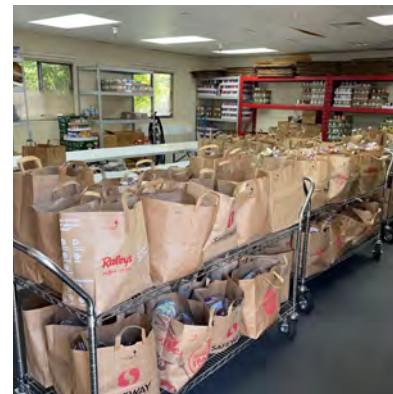
Community Spotlight - People's Pantry at Twin Lakes Church

As written by Robin Spurlock – Local Outreach Director/Global Outreach Admin for People's Pantry Twin Lakes Church

The community of Twin Lakes Church has compassion and a commitment to help those who are food insecure. Back in the mid-90's, Stephanie, in our church, had a vision to help feed those in need. Our pantry started out underneath a stairwell in our sanctuary building, storing dry goods that could be given out as people came to the church looking for food. As the need and the vision grew, People's Pantry was "born" in 2000. My father-in-law, Jack, and several others, provided leadership to a wonderful crew who assembled bags and distributed them as people walked through the line. It grew to a weekly average of 120 households with much larger needs around the holidays.

When the pandemic hit in 2020, we had to rethink our system. The pantry fell under my responsibilities as the new Local Outreach Director. We started a drive-thru system and moved into a space that allowed us more storage and fridge/freezer space so we could provide protein sources. We are now serving an average of 170 households, or more, each week.

We have an overabundance of dedicated volunteers who serve each week! We strive to call each guest by name, get updates on their lives, and for those who want prayer, they pull into a spot where a volunteer prays with them. We desire that our guests feel welcomed, known and heard. We are open every Wednesday, rain or shine, from 4:00 - 5:15 p.m. and are located at 2701 Cabrillo College Dr., Aptos, where our guests receive a dry goods bag, fresh produce, and a protein source each visit.



Annual Demographics Survey



Survey must be submitted electronically by April 19, access the survey at www.thefoodbank.org/survey24. Please refer to your organization's individualized survey email to find out how many surveys your agency is expected to submit. Using your agency participation dashboard, you can see how many surveys your org. has submitted. There is also live demographics data from your survey on the dashboard as well. Please let the Agency Network Managers know if you have any questions or need additional support.

Save the Date

Please add the events below to your calendars.

We kindly request that agencies update us regarding changes to, or cancellations of, their distributions.

Monday, April 15

Partner Agency Meeting

10:00 a.m. – 1:00 p.m.

(lunch included)

St. Philip's Episcopal Church
5271 Scotts Valley Dr., Scotts Valley

Wednesday, April 24

Agency Network Team Office Hours

8:30 – 10:00 a.m.

[Join the Meeting](#)

Meeting ID: 265 503 077 122
Passcode: tAKfmj

Friday, May 3

CalFresh Forum

10:30 a.m. – 2:00 p.m.

(lunch included)

Twin Lakes Church – Monschke Hall
2701 Cabrillo College Dr., Aptos

800 Ohlone Parkway, Watsonville, California 95076

Agency Team Contact Information: 831.256.7201 | agencies@thefoodbank.org

WWW.THEFOODBANK.ORG

